

# User Manual for Cell Go

## 1. Quick Start Guide

### 1.1 Size, Buttons and Indicator

### 1.2 How to Add & Install a Device

#### 1.2.1 Add a Device

#### 1.2.2 Install a Device

## 2. How to Use

### 2.1 Home Page

### 2.2 Live View Page

#### 2.2.1 Live View

#### 2.2.2 Control

### 2.3 Device Details Page

#### 2.3.1 Alarm Settings

#### 2.3.2 AI Detection/Cloud Storage (Imou Protect)

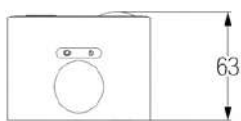
#### 2.3.3 Storage Settings

#### 2.3.4 Device Settings

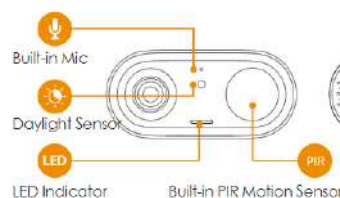
## 3. You may want to ask

## 1. Quick Start Guide

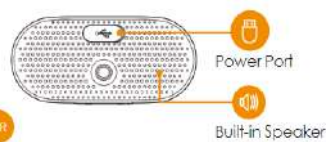
### 1.1 Size, Buttons and Indicator



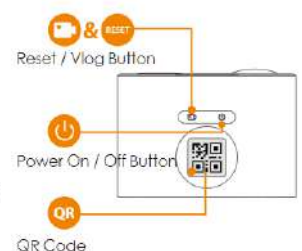
Size



Front View



Back View



Bottom View

Buttons

### 1. Reset/Vlog Button

- Short Click: Enter/Exit Vlog Mode, start continuous video recording.
- Press and hold Vlog/Reset button for 10 seconds: You will hear the prompt voice 'Beep' , means reset successfully.

## 2. Power On/Off Button

- Power on/off: Press and hold until hearing prompt voice , green LED lights on/off
- Turn on/off AP mode: double-click, red and blue lights flash alternately/off

## 3. Indicator Light and Device Status

Indicator Light	Device Status
Flashing blue	Charging
Solid blue	Fully charged
Flashing green	Ready for setting up
Solid green	Booting or working properly
Flashing red	Disconnected from the router
Solid red	Malfunction
Alternating red and blue	In VLOG mode / Hotspot enabled
Alternating red and green	Updating firmware



Indicator light in solid green

## 1.2 How to Add & Install a Device

### 1.2.1 Add a Device

[Tutorial Video for Adding](#)

1. Please DO NOT close the APP when adding the device, it may cause the FAILURE of configuration.

2. What to do if adding fails? [Tutorial for Resetting](#)

### 1.2.2 Install a Device

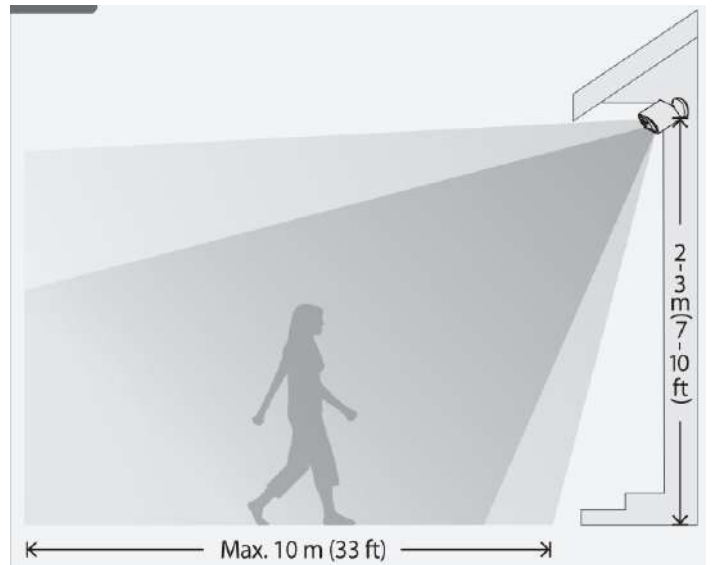
[Tutorial Video for Installation](#)

#### 1.2.2.1 Installation Position

Installation height: 2-3 m (7-10ft)

Monitoring distance: <10m (<33ft)

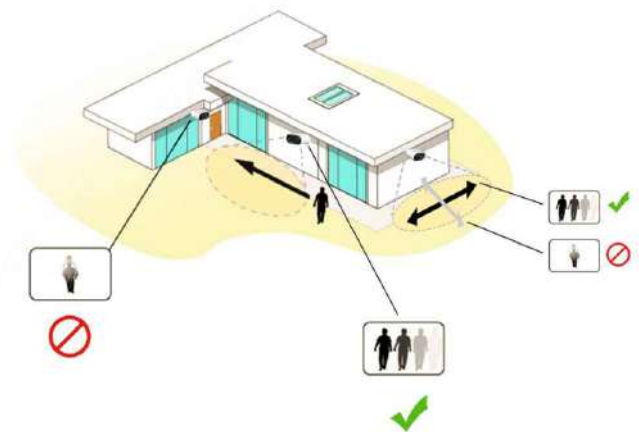
Installation angle: the angle between the camera and the vertical wall is between 30°~60°



## Camera Installation Precautions

To ensure cameras perform better, please...

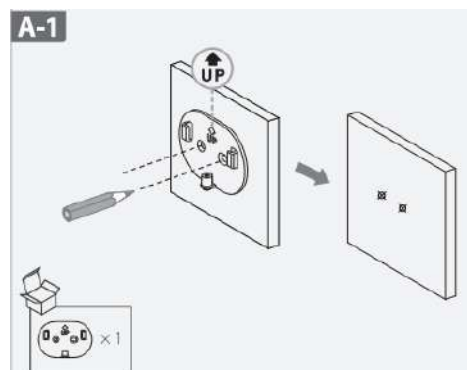
1. Avoid pointing the camera at any heat sources, such as automobile exhaust and more.
2. Avoid installing near air conditioners.
3. Avoid pointing the camera to mirror.
4. Avoid pointing the camera to walls or lawns.
5. Avoid installing the camera vertically (the bottom of the camera should not be perpendicular to the ground).

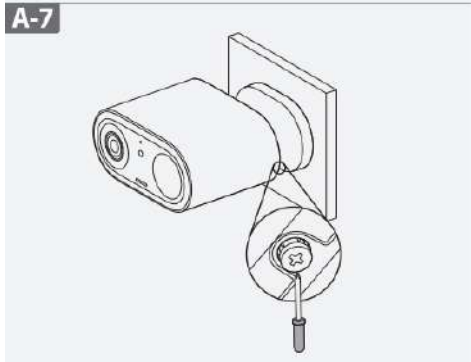
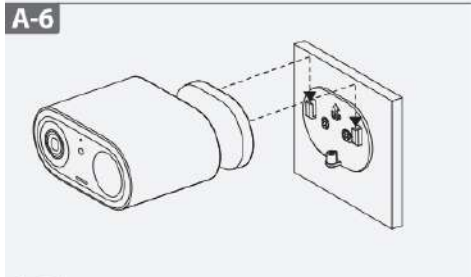
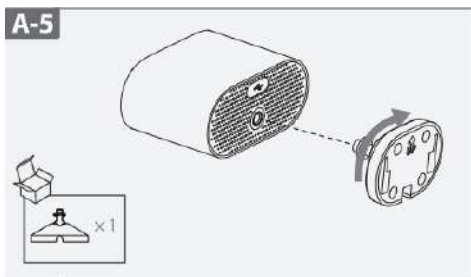
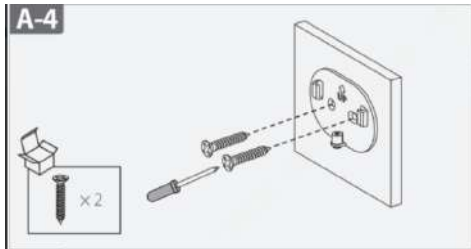
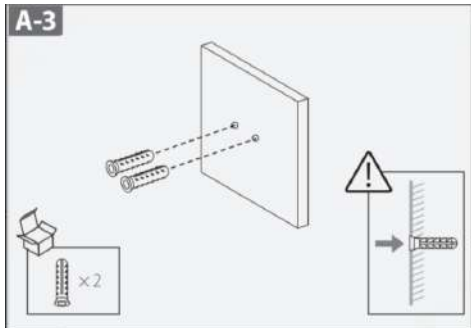
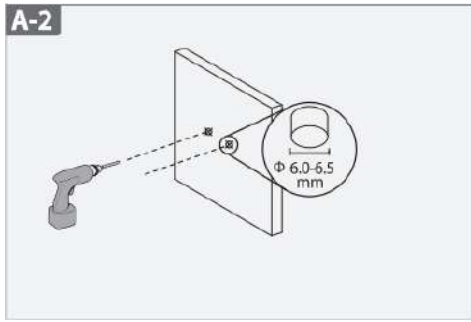


※You can refer to the image on the right.

### 1.2.2.2 Installation Method

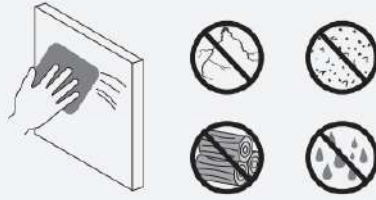
#### Method A (Punch Installation)



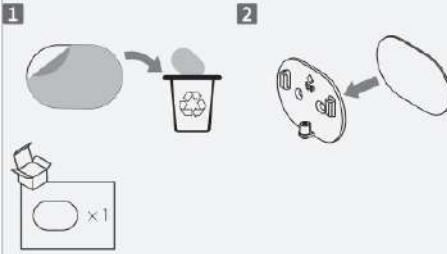


Method B (Paste Installation)

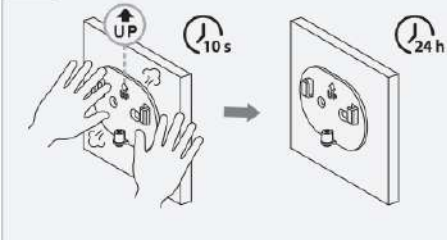
**B-1**



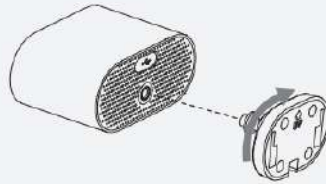
**B-2**



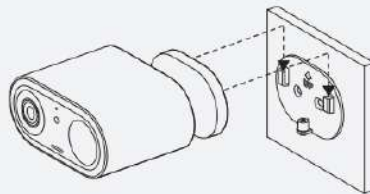
**B-3**



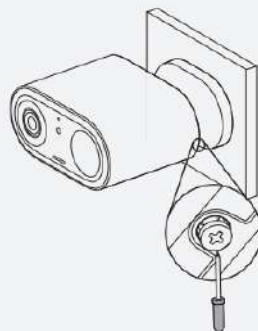
**B-4**



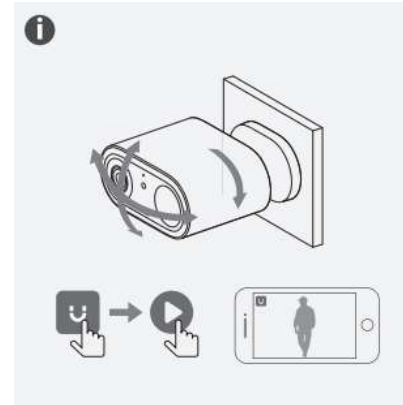
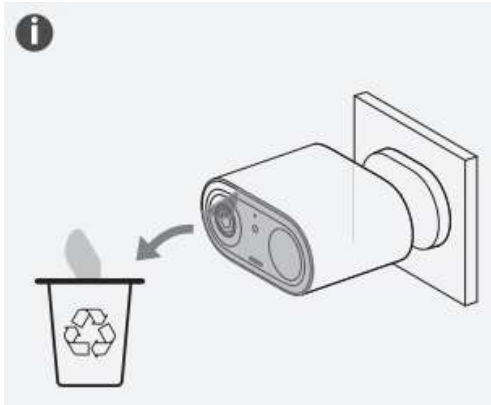
**B-5**



**B-6**



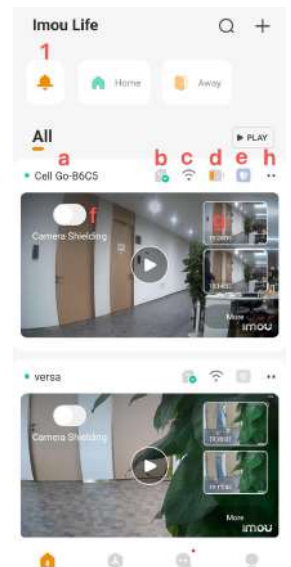
1. After installation, tear off the front protective film
2. After the installation is complete, adjust the camera angle to ensure that the person appears "vertically" in the screen, which will help improve the detection accuracy. People moving left and right in the screen are more likely to trigger alarm events than those facing or facing away from the camera

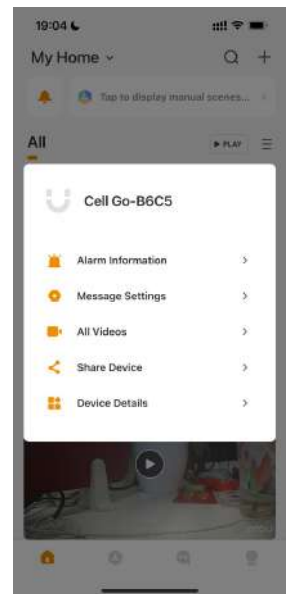


## 2. How to Use

### 2.1 Home Page

1. Do not Disturb mode (AKA, DND mode)
2. Product Card:
  - a. Customized Name
  - b. Status of local storage
  - c. Strength of Wi-Fi signal
  - d. Battery life
  - e. Imou Protect
  - f. Switch for Privacy mode
  - g. Thumbnails from recent Alarm
  - h. More:
    - i. Alarm Information
    - ii. Notification Settings ( Message Setting)
    - iii. All Videos (Recordings)
    - iv. Share Device
    - v. Device Details

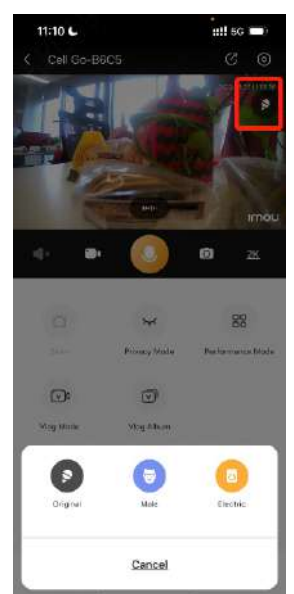
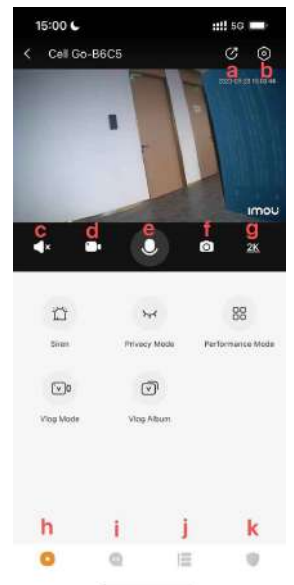




## 2.2 Live View Page

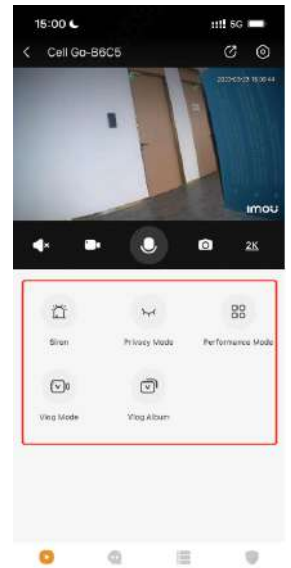
### 2.2.1 Live View

- a. Share
- b. Device Details
- c. Sound switch for Live view
- d. Recording switch of Live view:
- e. Microphone switch : When turned on, you can talk two-way  
 Tips: During two-way talk, a floating microphone icon appears for simulating different sounds.
- f. Screen capture : You can find and download screenshots in Local Files
- g. Resolution : 2K, 1080P, 480P
- h. Preview page
- i. Inbox page: View alarm messages
- j. Video page: View historical videos
  - i. The recording page has cloud storage and card storage path
  - ii. Cloud storage only records events, and viewing the full video can be found in card storage.
- k. Imou Protect



### 2.2.2 Control

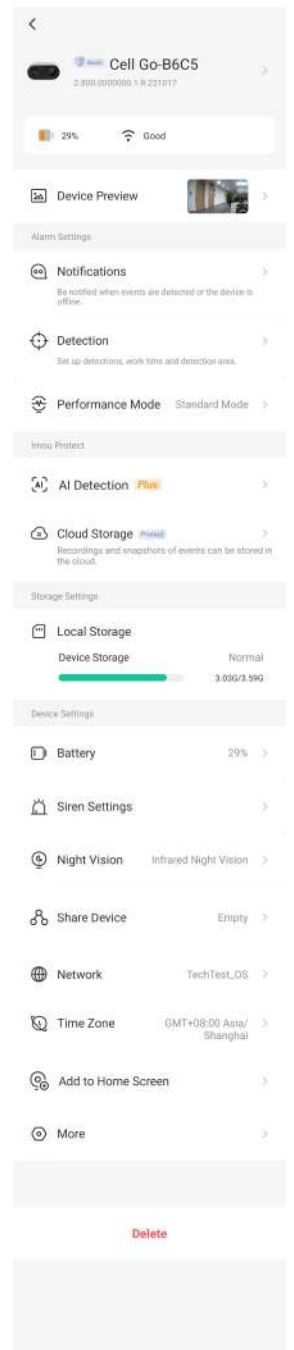
- a. Siren: Turn on/off the siren manually
- b. Privacy Mode: Turn privacy mode on/off
- c. Performance Mode: Working modes, including: common mode, high performance mode, power saving mode, continuous recording mode, custom mode, Vlog mode
- d. Vlog Mode: Turn on/off Vlog mode
- e. Vlog Album: You can view the recorded Vlog here.



## 2.3 Device Details Page

**The device details page of Cell Go contains a total of 8 modules:**

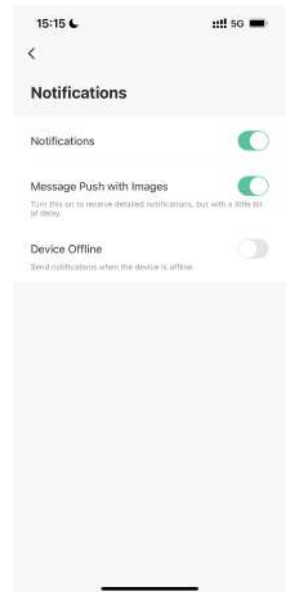
1. View basic device information: View device name, serial number , device label ( QR code ), firmware version and other basic information; modify device name and device password; user feedback.
2. Device environment information: battery level, Wi-Fi signal strength
3. Device Preview: Automatic capture and customization
4. Alarm settings: Set alarm notifications (push), detection parameters (type, sensitivity, region, time period, etc.), working mode
5. Imou Protect : Value-added service, corresponding functions can be used after opening (see Imou Protect introduction for details).
6. Storage Settings: Set local storage. Cell Go comes with 4 GB eMMC storage.
7. Device Settings: Privacy Mode, Battery Level, Siren Settings, Night Vision, Share Device, Network, Time Zone, Add to Home Screen, More( Indicator Light, Device Beep, Device Audio Collection, HDR, TLS Encryption, Date Format, Restart Device)
8. Delete



## 2.3.1 Alarm Settings

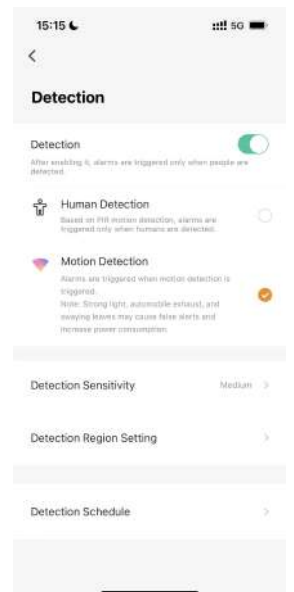
### 2.3.1.1 Notifications

1. Switch for Notifications; no longer receive alarm messages from this device after being turned off, and it is turned on by default.
2. Message Push with Images: When turned on, the push message will be accompanied by photos, which is turned on by default.
3. Device Offline: When turned on, the device will be pushed when it is offline, and it is turned off by default.



### 2.3.1.2 Detection

1. Detection Switch : After turning it on, the detection is started
  - a. Human Detection : Advanced humanoid filtering based on PIR detection, only when humanoid events are triggered, alarm events and videos will be generated .
  - b. Motion Detection ( PIR detection): The detector passively receives and detects infrared radiation from the environment. Changes in infrared radiation can trigger an alarm ( Therefore, bright light exposure, car exhaust, shaking leaves can all affect the accuracy of event detection and consume battery life unnecessarily) .
2. Detection Sensitivity : can set the distance near, medium and far
3. Detection Region : The orange part is the detection region
4. Detection Schedule: Set the detection time by time period.



### 2.3.1.3 Performance Mode

**Adjust the recording duration and (twice) detection interval according to user requests. There are six modes: Standard, High Performance, Ultra Power, Continuous Recording, Custom, and Vlog.**

1. Standard mode
  - a. Video duration up to 8s
  - b. The detection interval is 60s, and the interval between two events is 60 seconds
2. Power saving mode
  - a. Only preview , no message notification and recording

### 3. Custom mode

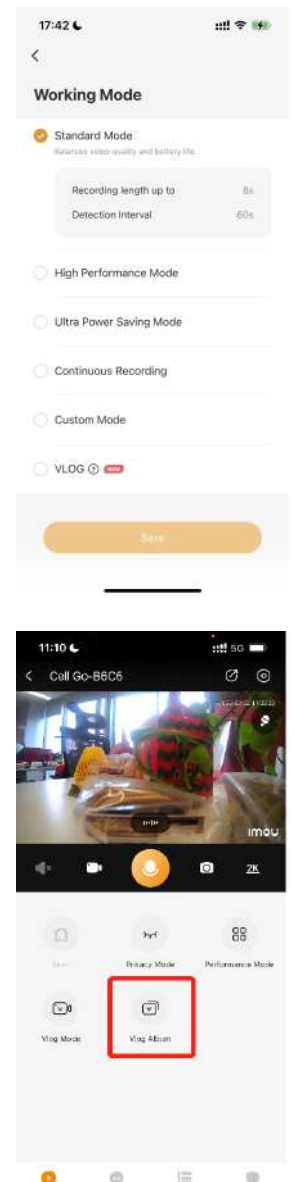
- a. You can set the recording duration and detection interval by yourself.

### 4. Continuous recording mode

- a. It is recommended to plug in.

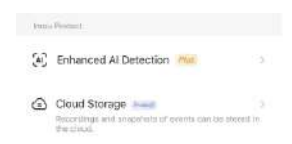
### 5. Vlog mode

- a. How to turn on/off Vlog mode?
  - Click the Vlog/Reset button to enter Vlog mode, and the device starts recording continuously. At this time, the indicator light flashes alternately red and blue; click this button again to exit Vlog mode. Please complete the device's Wi-Fi distribution network addition before using the Vlog button for the first time.
  - Turn on/off Vlog Mode on the preview page
- b. How to download a Vlog recording?
  - In the preview interface, select [Vlog Album] - Select Video - Download. Edit or share videos in [Me] - [Local Files]



## 2.3.2 AI Detection/Cloud Storage (Imou Protect)

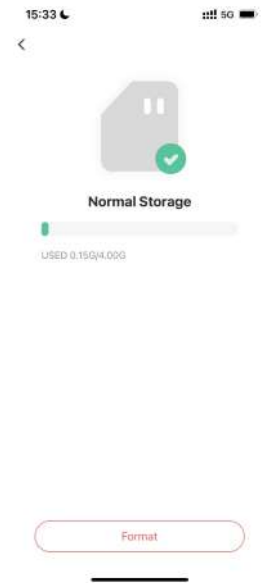
1. AI Detection: Plus Package Features
2. Cloud Storage: Plus package, Basic package function, the switch status determines the status of the cloud storage upload function, which is enabled by default after opening



## 2.3.3 Storage Settings

- Local Storage Status: Check the remaining space of internal storage (built-in memory card capacity is 4GB)
- Format: the built-in memory card
- Storage time: depends on the actual code rate, 6-15h empirically.





## 2.3.4 Device Settings

### 2.3.4.1 Battery Level

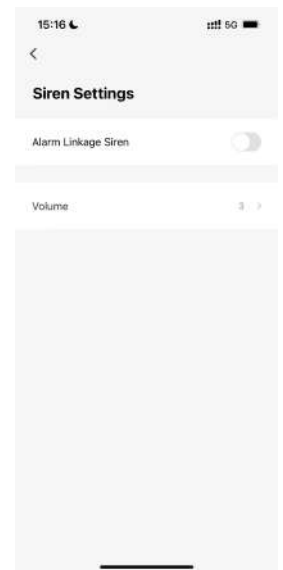
About charging method:

- a. Connect the charging cable to the device charging port (interface Micro-USB, power 5V2A)
- b. Imou official matching solar panels
- c. Adopt power bank (5V2A) power supply



### 2.3.4.2 Siren Settings

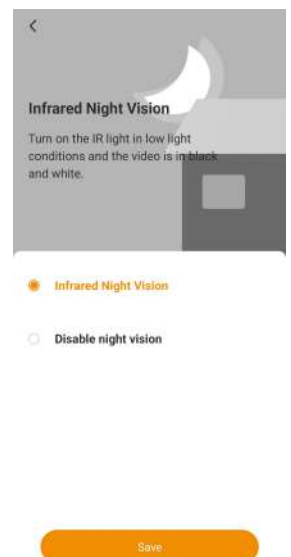
1. Alarm linkage siren: When the device detects a dynamic inspection, the siren sounds (More than 80dB within half a meter).
2. Alarm volume setting: 5 gear adjustment, 1 minimum, 5 maximum



### 2.3.4.3 Night Vision

The Cell Go is equipped with infrared lights and offers infrared night mode:

1. After turning on, when the ambient brightness is insufficient, it will be illuminated by the infrared lamp, which will increase power consumption;
2. After closing, do not turn on the infrared light, may lead to low brightness environment picture is not clear.



### 2.3.4.4 Network

1. Network (Wi-Fi)

Reconfigure Wi-Fi information into the camera.

2. AP Mode

Support device Wi-Fi hotspot mode. If there is no external network, you can directly connect the camera to the mobile phone, live view and playback in real time.

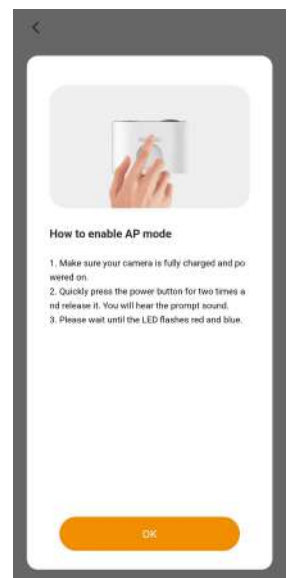
1. Enter the network configuration, select no network direct connection



## 2. To enable AP mode:

- a. Make sure your camera is fully charged and powered on.
- b. Quickly press the power button 2 times and release it. You will hear the prompt sound.
- c. Wait until the LED indicator flashes red and blue.

Note: when Wi-Fi is unavailable or unstable, you can connect your phone to the device hotspot for streaming and checking local recordings, but your camera will be disconnected from the Wi-Fi.



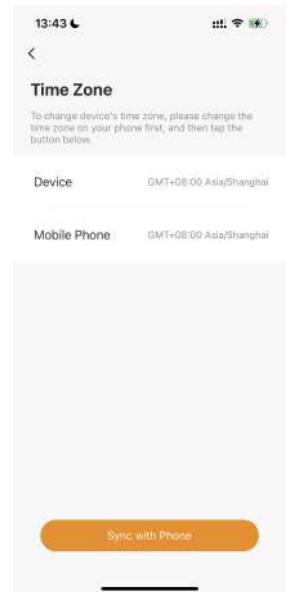
## 3. After enabling Vlog mode, the camera will record continuous video in Vlog mode.

Note: When using it for the first time, calibrate the time first



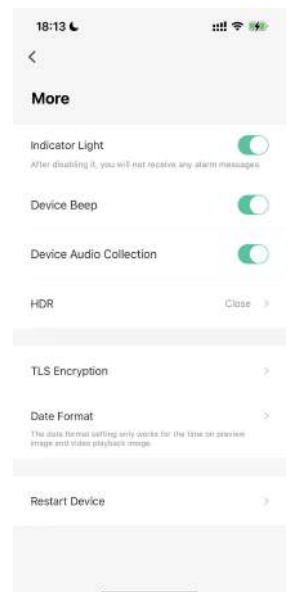
### 2.3.4.6 Time Zone

If you want to modify the current time zone, you need to modify the phone time zone first, and then click "Sync with phone" to sync.



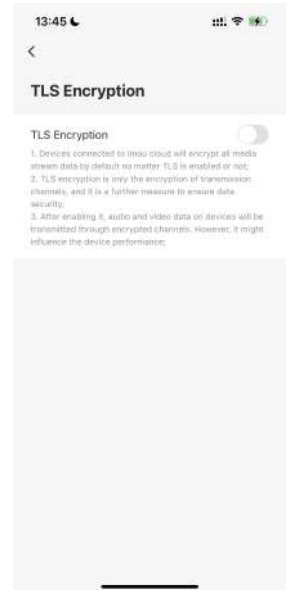
### 2.3.4.7 More

1. Indicator Light: Switch for device indicator
2. Device Beep: Switch for device tone
3. Device Audio Collection: Switch for device audio capture
  
4. HDR: It is recommended to open in a backlit scene with strong contrast on both sides of the screen; for example, when the device is installed indoors and faces a bright door or window, the wide dynamic is closed by default.



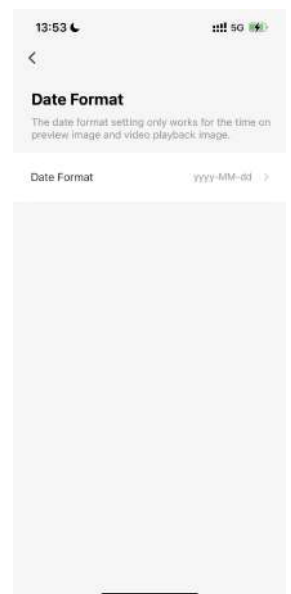
### 5. TLS Encryption

- a. Devices involved in the music orange cloud will encrypt all media stream data by default, regardless of whether TLS is enabled or not
- b. TLS encryption is only the encryption of the transmission channel, further ensuring data security
- c. When turned on, audio & video media data will be transmitted through encrypted channels, which may affect device performance



## 6. Date Format

Date format only for the time on the preview and playback screen



## 3. You may want to ask

1. What should I pay attention to when using it for the first time?
  - a. After the device is out of the box, fully charge it before using it for the first time (the indicator light flashes blue to indicate "charging", and "long blue" indicates it is fully charged)
  - b. Check for firmware updates: Optimized experience and fixed bugs.
  - c. Check accessories:
    - Camera
    - Mounting Template
    - Quick Start Guide
    - Power Cable

- Tape
- Mounting Bracket
- Expansion Screw( ×3)
- Magnetic Accessory

## 2. How to set up a Cell Go?

See *1.2 How to Add & Install a Device* for details.

## 3. What to do when suffering connection failure?

### a. Failed in bluetooth pairing

- i. Make sure you have turned on the Bluetooth of your phone.
- ii. Make sure the LED indicator is slowly flashing green before setup.
- iii. After multiple attempts and it doesn't work out, please press and hold the Vlog key for 10 seconds to reset (the indicator will turn flashing green after reset). After successfully reset, scan the code and connect again.
- iv. Make sure you have entered the correct serial number of the device if you choose to manually add it.

### b. Failed when connecting to cloud platform

- i. Green light flashing means device failed to connect with the router
  - Check if the router password is correctly put in.
  - Check if the device is connected to a 2.4GHz Wi-Fi.
- ii. Green light fixed means device failed to connect to the cloud platform
  - Check if your Wi-Fi network works properly.
  - Enable the personal hotspot of another phone to replace your Wi-Fi temporarily. If it works, then switch back to home Wi-Fi (enter Device Details - Network).

## 4. How to reset Cell Go?

Press and hold the Vlog/Reset button for 10 seconds, and you will hear the prompt sound 'Beep', which means reset successfully.

## 5. Can I live view or playback continuously?

1 minute limitation for Live View; 3 minutes limitation for Playback.

## 6. How to wake up the camera?

- a. Live view the camera
- b. Press physical buttons of the camera
- c. Waked up automatically by motions.

7. Why is there no sound in the recording?

Please check if Device Audio Collection button has been switched on.

8. What to do when motions are missed frequently?

- a. Make sure detection distance does not exceed 10 meters.
- b. Increase detection sensitivity to a higher level.
- c. Turn off Human Detection and turn on Motion Detection for higher accuracy

9. What to do when there are frequent false alarms?

- a. Since it's PIR detection for battery cameras, please try to install the camera avoiding direct sunlight, car exhaust, spontaneous heat sources such as air conditioning units, air vents, and routers with strong signals.
- b. Decrease detection sensitivity.

10. What if there are padlock icons on the recordings?

- a. Severe network packet loss could cause the phenomenon. Please check the Wi-Fi status in the Device Details.
- b. Try re-enabling the Cloud Decoding switch.

11. Why are the recordings only 8 seconds long?

- a. Check if the free trial Imou Protect plan (for cloud storage) has been activated. Videos recorded under free trial are for 8 seconds by default. You could check the whole event in SD card recordings.
- b. Check if it's under Standard Mode. In this mode, each event can be recorded for up to 8 seconds, with an interval of 60 seconds between each event. For example, after someone passes by in front of the camera for the first time, if there are people appearing again within 60 seconds, the alarm will not be triggered; and the maximum recording time for each recording is 8 seconds.

12. Why is the LED light off when there is motion in front of the camera?

- a. The event won't be triggered again within detection interval. You could adjust detection interval in Device Details - Performance Mode
- b. The Indicator Light switch is not turned on.

13. What is Privacy Mode? How to activate it?

To activate/disactivate privacy mode: Enter Device Details, turn on/off Privacy Mode.

14. How long can the 4GB storage space be used?

Depending on the actual use of the camera, it will hold more than 6 hours according to experience, 15 hours top.

15. How to delete the files in memory card?

- a. Format the card to delete them all.
- b. Old recordings will be overwritten automatically when the SD card is full.

16. Will the history recordings get erased after the camera is deleted?

No, it won't. It will happen only when memory card gets formatted.

17. Why does battery drop quickly?

- a. It depends on how you use the camera. Mainly because that PIR is triggered very often. And also, long-time previewing, screen recording the camera, 2-way talking would affect it.
- b. Laboratory data: 15.2 hours of proactive recording (54720s), 11.7 hours of intercom (42120s), 15.2 hours of proactive preview (54720s), and 8.8 hours of proactive preview with infrared light on (31680s).

18. Why is the battery not being charged?

- a. Try to replace the power adaptor and cord.
- b. Check if the adapter meets the standard: 5V2A (do not use a three-in-one data cable or computer USB output port to power up the camera)